

Annual Report to the Community



July 2016 - June 2017



TABLE OF CONTENTS

2	Message from the President
3	Board of Directors
4-5	Head Start/Early Head Start of the Lehigh Valley
6	Newton School
7-8	Northeast Regional Key
9	Child Care Information Service (CCIS) of Lehigh County
10	Volunteers and Special Events
11-12	Financials
13-14	Champions of Children 2016-17

A BRIEF HISTORY

Since our founding with Head Start as the core program in 1965, CSC has built on our expertise in early education, especially for low-income families and their children.

CSC believes that all children deserve a chance to succeed in school, and the path to success begins in early childhood within a nurturing family. We provide early learning and child care support services to young children and their parents, low-income families and child care providers.

CSC is a leader in early education and family development, promoting quality and innovative practices that affect the lives of 40,000 children annually in 16 counties of Northeastern Pennsylvania. Founded in 1981, CSC is committed to ensuring that children enter school ready to learn and their families are prepared to assist them.

CSC is a 501-c-3 not-for-profit organization employing approximately 300 staff.

PROGRAMS AND SERVICES

Directly provide **Head Start, Early Head Start, Pre-K Counts** preschool.

Administer the Keystone STARS program to improve child care quality through the **Northeast Regional Key**.

Administer subsidies to help low-income families access child care through the **Child Care Information Services** program in Lehigh County.

Provide professional and parenting education through **Early Education Academy**.

Newton School is a unique early childhood education program with STEM as a way of learning focus for preschoolers.

Designated **Pre-K Scholarship Organization** and **Educational Improvement Organization** awarded by DCED for the receipt and disbursement of funds allocated through the Educational Investment Tax Credit program (EITC).

MESSAGE FROM THE PRESIDENT

CSC has had another year of achievement! Through our services focusing on the needs of children and families – Child Care Works of Lehigh County, Early Head Start, Head Start, NE Regional Key and Pre-K Counts – we have made a positive impact on the future of our communities. Because of our services, more low-income families are able to go to work, knowing that their children are in safe and affordable child care programs. Because of our services, severely economically disadvantaged children birth to age five and their parents are able to have the Head Start Advantage and enter preschool and kindergarten ready to excel. Our Newton preschool helped to create future mathematicians, scientists, engineers and critical, creative thinkers. Because of our services, more than 200 of the most vulnerable infants and toddlers reached their potential and became curious learners. Because of our services, more than 703 Early Learning entities across 16 counties have improved their quality, earning higher STAR ratings. We are proud of the impact we have had throughout the region!

Community Services for Children is now embarking on the next evolution of our mission to positively impact children and families throughout the Northeast Region of Pennsylvania. During the last year, we took time to reflect on our history, our expertise, the community needs and our dreams for the future. We recommitted to our core beliefs –

- Every child deserves equal opportunity for school readiness and academic success.
- Family engagement is fundamental to child development at every stage.
- Early experiences shape adults' future health and well-being.
- Most vulnerable children and families are our first priority.
- High-quality early childhood education is critical to a thriving society.

With these beliefs in mind, and our agency values of honesty, innovation, respect, excellence and stewardship, we have recommitted to this important mission:

“Prepare young children and their families to succeed in learning and in life through innovative, comprehensive, leading-edge services.”

We at CSC are absolutely, passionately committed to this mission! Yet we know that it is a tough road ahead of us, given the enormous challenges we are facing in the Lehigh Valley. Though the State of Pennsylvania has made significant progress in its investment in early childhood education, there continues to be a serious gap in opportunities for high-quality, birth to age five early childhood development and education. This is especially true for children facing poverty, whose families cannot afford the cost of high-quality care. We all know that the investment in the youngest, most vulnerable children facing adverse experiences including poverty just makes sense. A recent study conducted by economics researchers from Texas A&M and Notre Dame universities concluded that not only was the student enrolled in Head Start better off, but that the children of the enrolled student, or the next generation, were 12 percent more likely to graduate from high school and 15 percent more likely to attend college.

Again and again, research is demonstrating that our nation's Head Start program has long-term effects on inter-generational poverty and school achievement. Yet Early Head Start/Head Start of the Lehigh Valley is only serving 18 percent of the eligible children in the Valley. Far too many young children are facing enormous challenges including homelessness, food insecurity, chaotic family life, abuse, chronic health problems and violence. These traumatic experiences will affect their entire life course. CSC is committed to intervening and changing the trajectory for these children to one of success – where every child and family can flourish. We thank our staff, donors and community partners for your constant support. Together, we can achieve our mission.

Sincerely,



Paula J. Margraf, President and CEO



IN MEMORIAM

The Lehigh Valley community lost a great leader and visionary in April with the passing of Edward Donley. He and his wife, Inez, who passed away in 2013, were tireless advocates for children. Their philanthropy and leadership helped to create the Donley Children's Campus, and their commitment to early education was the impetus for the creation of the Inez and Edward Donley Award for Children's Advocacy, which CSC gives annually to acknowledge individuals and organizations who have significantly improved the quality of life for children.



BOARD OF DIRECTORS: CSC

Paula J. Margraf, CEO

Jay Kshatri, CHAIR
Think Smarter World

Elsbeth Haymon, VICE CHAIR
Allentown Art Museum (retired)

Donald M. Bernhard, SECRETARY
Downtown Allentown Community Development Initiative

Julianna Timmcke, TREASURER
Management Consultant

Andrea Brady, Concannon, Miller & Co, PC

Hillary Bruce, Head Start Policy Council

Christopher Cardenas, PPL

Iris Cintron, Bethlehem Area School District (retired)

Mary Colon, Bethlehem Area School District (retired)

John Diamant, Victaulic International (retired)

Christopher Donigan, B. Braun Medical

Elaine Donoghue, MD, Lehigh Valley Hospital

Ray Federici, Alvin H. Butz, Inc.

Barbara Fraust, Carol C. Dorey Real Estate

Kathryn Leber, Parkland School District (retired)

Colleen Mooney McGee, Crayola

**David Rabaut, PhD, United Way of the Greater
Lehigh Valley (retired)**

Judith Rex, PhD, Northampton Community College

Diane Scott, EdD, Allentown School District (retired)

Frank Smith, NAI/Summit Management

Rebecca Young, JD, KingSpry

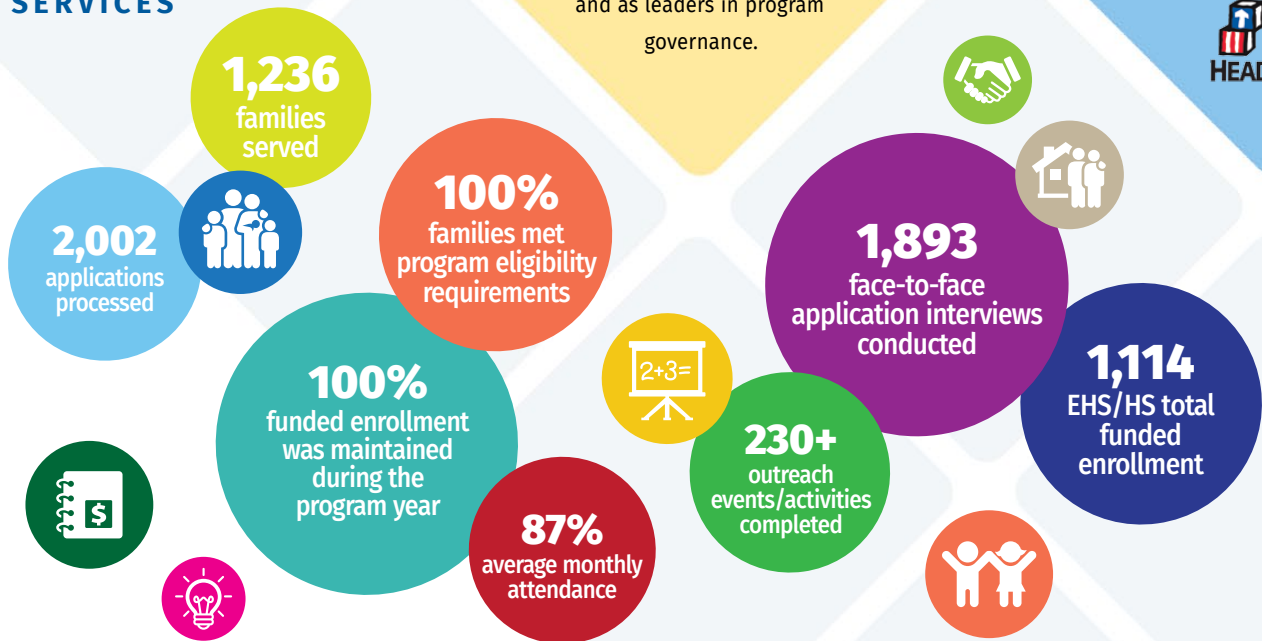
HEAD START OF THE LEHIGH VALLEY

Head Start (HS) and Early Head Start (EHS), serving two generations, support the mental, social and emotional competence of children from birth to age five. In addition to education, HS/EHS provide children and their families with health, nutrition, and social-emotional education. Programs are responsive to each child and family's ethnic, cultural and linguistic heritage, and focus on whole-child development in the context of the family and community. HS/EHS provide early education within a comprehensive service framework that is committed to the engagement of families in the development of their children. HS/EHS recognize parents as the child's first and most important teacher and as leaders in program governance.

Since 1965, Head Start of the Lehigh Valley has served 36,000 children.

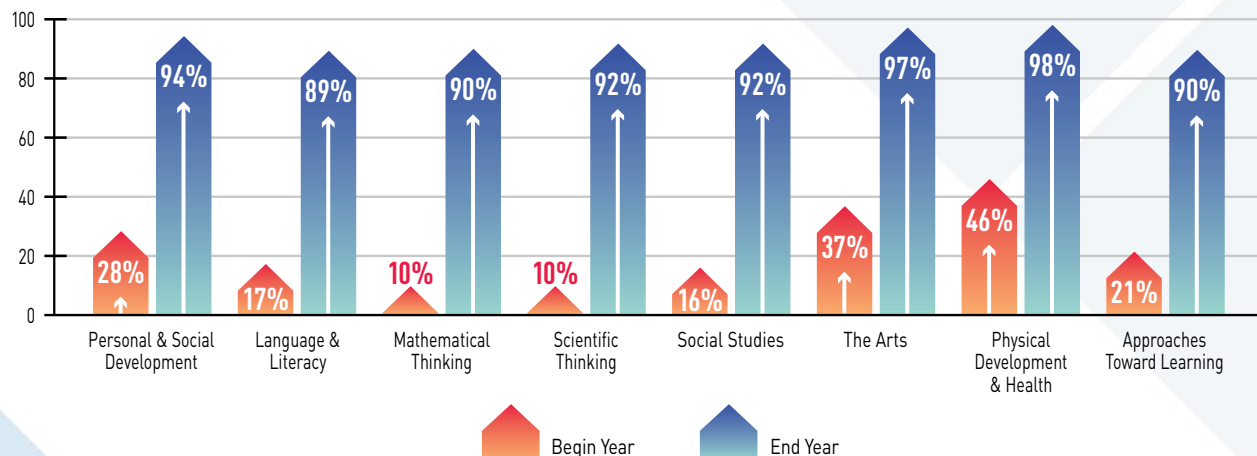


ENROLLMENT SERVICES



Head Start Child Learning Domain Outcomes

Percent of Children* Demonstrating Proficiency†



* 625 children who were present at all three assessment points – begin year, midyear and end of year.

† "Proficiency" – Measurement by the Work Sampling System Assessment indicates that the skill, knowledge or behavior is firmly within the child's range of performance.

EARLY HEAD START OF THE LEHIGH VALLEY



We offer Early Head Start, for children birth to age 3, through both home-based and center-based programs. Home-based services include home visits, child and parent learning groups and resources for families to achieve goals and encourage healthy parent-child relationships. The Early Head Start center-based program, known locally as SafeStart, mitigates the symptoms of prenatal exposure to drugs/alcohol. SafeStart is the region's only therapeutic classroom program for abused infants and toddlers. The SafeStart children are referred to the program by the Children & Youth offices in Lehigh and Northampton Counties.

FAMILY ENGAGEMENT SERVICES

639
of fathers

participated in activities to support their children's development.

100%
of all families

completed both a family assessment and a family goal plan.

98%
of EHS families

completed a home safety plan.

75%
of all families

accomplished three or more goals from their family goal plan.

100%

of enrolled families participated in the read-a-book campaign, strengthening literacy activities in the home.

96%

received medical exams

93%

received dental exams

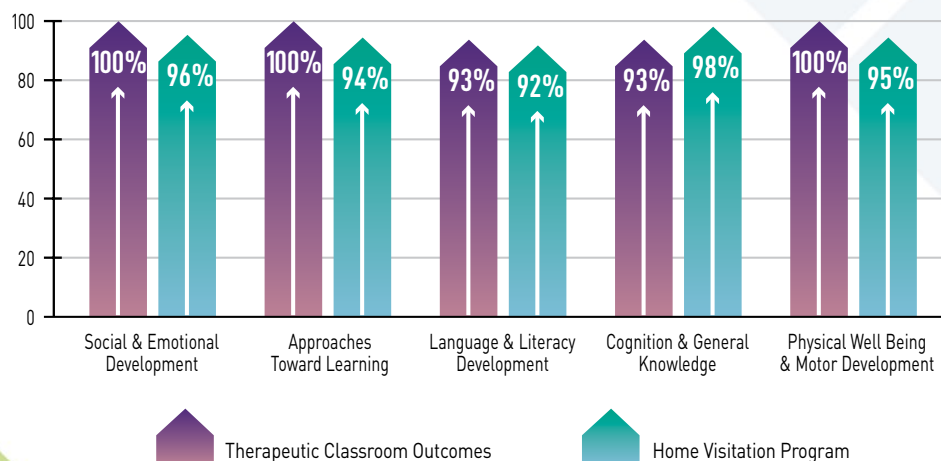
HEALTH SERVICES

In October 2017, the Middle States Association Commissions on Elementary and Secondary Schools (MSA-CESS) re-accredited CSC for another seven years, a move that recognizes the agency as a leader in quality standards.

This accreditation is based on 12 principles: mission; governance and leadership; school improvement planning; finances; facilities; school organization and staff; health and safety; educational program; assessment and evidence of student learning; student services; student life and activities and information resources.

Early Head Start – Achievement of Developmental Milestones at Age 3

2016-2017



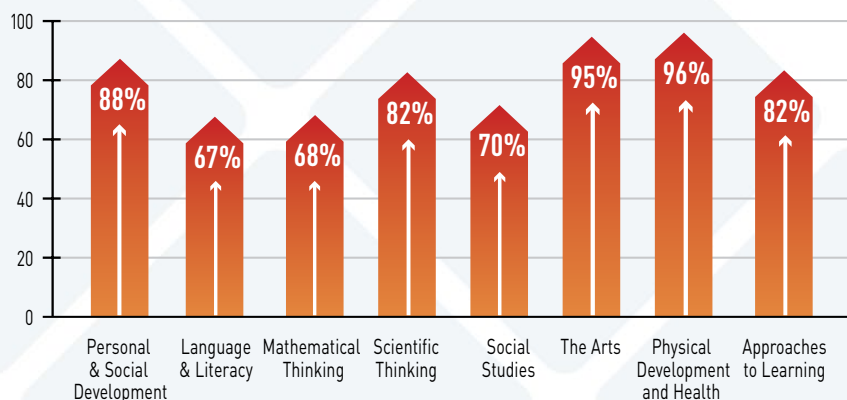
Federal legislation requires that all Head Start programs receive a comprehensive on-site review each year. Head Start of the Lehigh Valley's most recent review was conducted in April 2016. Twenty-two areas were found in compliance and two areas were found to be non-compliant. All areas have been corrected.

HEAD START ACCOUNTABILITY



Head Start Newton School Child Outcomes

All Children* Demonstrating Proficiency† WSS **Kindergarten** Level Assessment (2017)



* 20 children (includes 9 children with IEPs and/or Dual Language Learner)

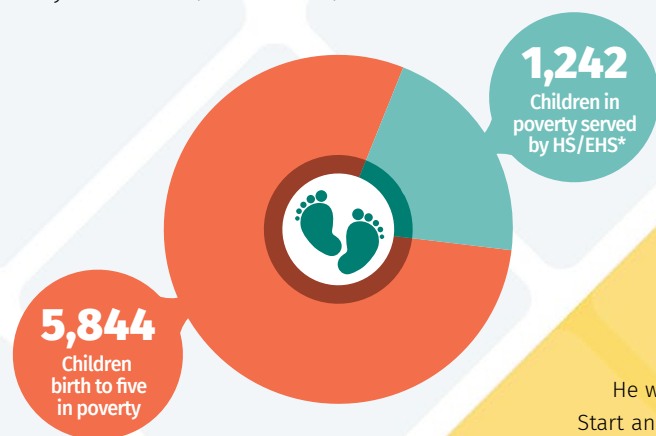
† "Proficiency" - Measurement by the Work Sampling System Assessment indicates that the skill, knowledge or behavior is firmly within the child's range of performance.

Newton School is a unique early childhood education program with STEM as a way of learning focus for preschoolers that opened with the start of the 2014-2015 program year in Allentown.

The STEM-approach to learning uses hands-on experiences to help children discover ideas in science, math and engineering. Teachers use open-ended questions to support children's learning.

Total Percent of Children in Poverty

Of 5,844 children, 1,242 are being served by Early Head Start/Head Start/Pre-K Counts.



*Based on 2011-2013 Children Age Birth to 5 by Poverty Level (American Community Survey 3-Year Average)

HEAD START SUCCESS STORY

Abraham* began his journey with Head Start of the Lehigh Valley when he was 3. He had been enrolled in an autistic support classroom through Colonial Intermediate Unit 20, and his teachers noticed that while he was nonverbal, displayed some defiant and attention-seeking behaviors and needed to learn play skills, he had many strengths that set him apart. Abraham was interested in the world around him, could easily follow a routine and wanted to play with the other children—qualities that can be a challenge for children with autism.

He was referred for a collaborative classroom program that was developed between Head Start and CIU20 to better prepare students with autism for kindergarten. With the assistance of therapeutic support staff and a behavioral support consultant, new skills are introduced in the Head Start classroom morning session, reinforced in a smaller intensive teaching setting in the afternoon and emphasized in the home. Students learn to play appropriately with toys and their peers, communicate effectively and follow the classroom rules and routine.

When Abraham started school, he had trouble transitioning from one activity to another, and he often had to be redirected from preferred activities, such as having a snack or playing, to tasks such as cleaning up toys. He also struggled with sharing the attention of teachers and lashed out by hitting, throwing toys and trying to run from the classroom. At home, he had a difficult time playing with his older siblings, and would often run out of the house.

But when he was calm, staff noticed he was curious and focused, so they worked together to help him achieve his goals. By halfway through the school year, he had bonded with staff and seldom made escape attempts, threw tantrums or tried to hurt others. He began to repeat words and animal sounds, adapted to classroom activities and was able to sit for story time. He is a shining example of what children can accomplish with support.

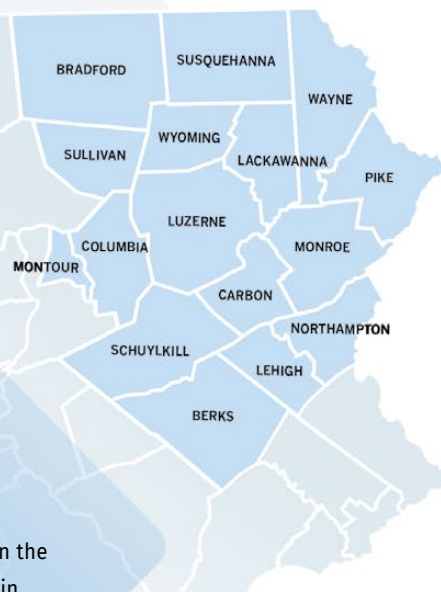
*Name has been changed.

NORTHEAST REGIONAL KEY

The goal of the Key is to help child care providers improve the quality of early childhood education throughout its 16-county region by providing management services, grants and awards, and professional development and technical assistance with a STAR rating system. Over 700 child care providers participate in the STARS program.

The Key assists and recognizes programs for meeting standards of practice and professionalism set by Pennsylvania. The highest level is a STAR 4 facility.

In July 2016, the Office of Child Development and Early Learning redistributed the counties in each of the Regional Key areas so that they would align with our Regional Certification Offices. The Northeast Regional Key transitioned three of our counties into other Regional Keys, which resulted in a reduction in the number of licensed programs in the Northeast Region, reduction in the number of programs participating in Keystone STARS as of July 1, 2016, and a reduction in the other services we provide. The counties that were transitioned were Bucks, Lycoming and Tioga. The Northeast Regional Key gained Montour County through the re-alignment.



Keystone STARS

	2015	2016	2017
Programs in STARS	942	930	703
STAR 3 and 4	309	337	247
% of the regulated programs at STAR 3 and 4	19.6%	22%	22%
# of children in STAR sites in the NE Region	40,664	40,258	30,191
# of children in STAR 3 and 4 sites	14,166	15,447	11,879
% of the regulated programs are in STARS			
NE Region	58.2%	58.8%	63.0%
Statewide	48.7%	49.4%	51.5%

ONAL KEY

Professional Development

- Hours of professional development delivered in region — 1,606
- Hours of college courses offered — 2,565
- Attendees at professional development activities — 6,762
- Number of teachers in college courses — 696

Early Childhood Mental Health (ECMH)

- Hours of technical support regarding young children and their social and emotional health — 2,200
- Children served by Early Childhood Mental Health Consultants — 81

STARS Technical Assistance

- Programs participated in STARS Technical Assistance — 86

Infant Toddler Technical Assistance

- Programs received Infant Toddler Technical Assistance — 28

School-Age Afterschool Quality Project (ASQ)

- Programs participated in the School-Age ASQ and received Professional Development, on-site Technical Assistance and Resources — 8

Health and Safety Consultation

- Programs received on site health consultation services — 22

Grants and Awards

- Early learning and school age programs awarded grant/award money — 446
- Dollars awarded — \$6,172,805

RACE TO THE TOP (RTT)

Serves 5 Counties:

Bradford, Carbon, Schuylkill, Sullivan and Susquehanna counties

Assisted programs with opening and designating at a STAR 1:

6

Stand-alone Pre-K Counts programs designated at a STAR 4:

12

RTT programs that moved up in STARS from a STAR 1:

STAR 2 3

STAR 3 2

STAR 4 2

In 2016-2017 the Office of Child Development and Early Learning put together workgroups to look at Keystone STARS and ways to enhance the program. Through this the Keystone STARS Program went through a revisioning process to make things better for child care programs, children and families. Keystone STARS is still built on a strong foundation of standards that we feel programs should follow to exhibit quality child care.

The three core principles guiding the Keystone STARS program are:

1

A whole-child approach to education is essential to meeting the holistic and individual needs of each child and family.

2

Knowledgeable and responsive early care and education professionals are essential to the development of children and the support of families.

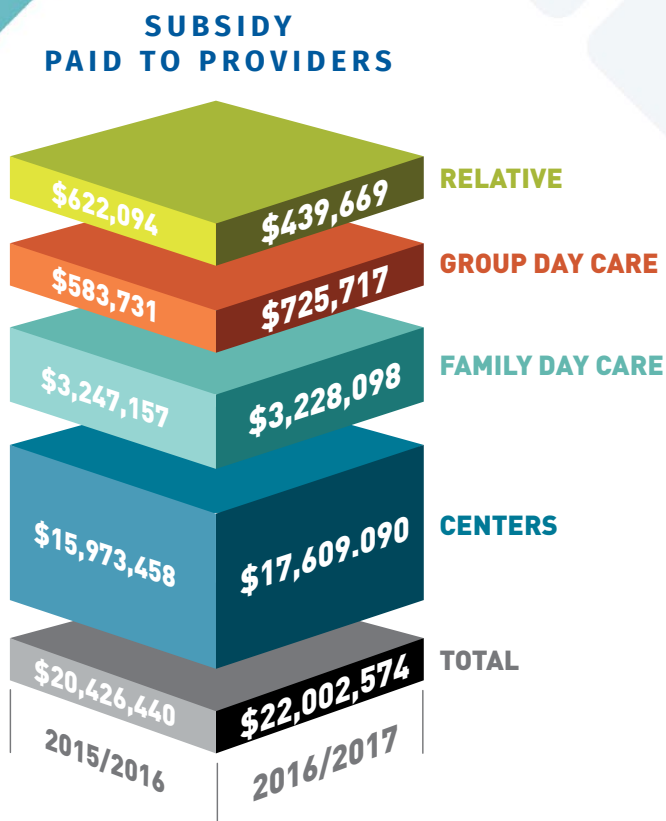
3

Building and sustaining ongoing positive relationships among children, families, early care and education professionals and community stakeholders is essential for the growth and development of every child.

CCIS

CHILD CARE INFORMATION SERVICES OF LEHIGH COUNTY

Child Care Information Services of Lehigh County (CCIS) administers subsidies for low-income families, providing access annually to child care for over 9,000 children, infants through grade 5. More than 350 child care providers participate in the program. CCIS also offers child care referral services for parents and assistance in choosing child care.



Basic CCIS Statistics

	2015/2016	2016/2017
Monthly average number of children on waiting list	388	804
Number of children enrolled in subsidized childcare	4,862	4,794
Average number of providers paid	384	383
Number of active providers at year's end	393	379

In December 2016, state-wide CCIS programs changed from a six-month eligibility determination to a 12-month determination, resulting in an increase in the waiting list.

AROUND THE AGENCY



This cardboard elephant was one of many creations made by Head Start students for this year's Cardboard Challenge.



Congressman Charlie Dent congratulates Betsy Savoia, assistant director of CASA of Lehigh County, on the organization's receipt of the Inez and Edward Donley Award for Children's Advocacy.



Paula Margraf, CEO of Community Services for Children, presents the Inez and Edward Donley Award for Children's Advocacy to Dr. J. Robert "Bob" Lovett, a retired Air Products executive.



Air Products retirees visited Early Head Start-center based to learn about the services we offer children birth to age 3.



Krystal DaSilva, a Newton School teacher, led the Da Vinci Science Center's "Amazing Bodies" summer camp.

FAMILY FUN DAY



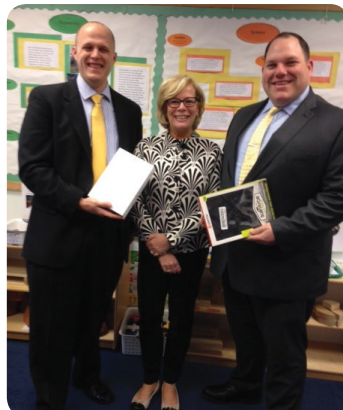
Lehigh Valley Health Network's Miles of Smiles and Dr. Debra Campbell, vice-chair of the Department of Dental Medicine for LVHN, ensure CSC students receive dental checks throughout the year.



Paula Margraf, CEO of Community Services for Children, thanks Congressman Charlie Dent for his continued enthusiastic support of Head Start, which earned him a National Head Start Association Promise Award.



Stacy Perlaki, CSC's events and volunteer coordinator, shares information at the Parkland Community Resource Fair.



Don McKellar (left) and Rich Read, of PNC, visited CSC and CEO Paula Margraf to donate an iPad to the Head Start program.



Carol Obando-Derstine, of PPL, presents a \$40,000 check to Paula Margraf, CEO of CSC, to support scholarships to early education programs.

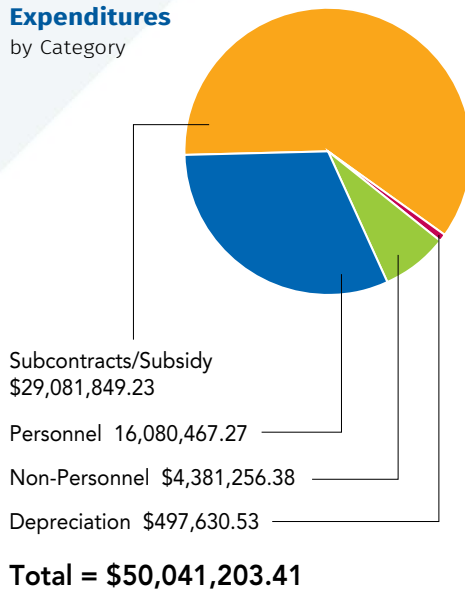
FINANCIALS

A SUMMARY OF UNAUDITED FINANCIALS

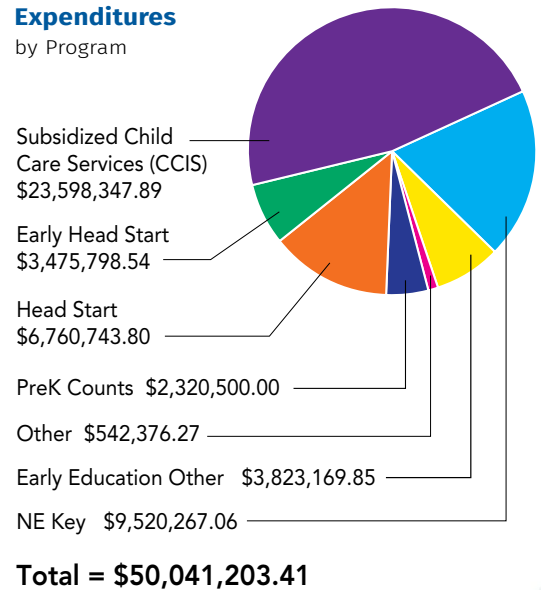
2016/2017

REVENUE - FUNDING SOURCE	16-17 FISCAL YEAR	%	15-16 FISCAL YEAR	%
FEDERAL				
Dept. of Health & Human Services	\$10,236,542	20.5%	\$10,846,505	21.4%
STATE				
PA Dept. of Education	564,620	1.1%	521,394	1.0%
PA Office of Child Development & Early Learning	36,913,014	74.0%	3,7417,806	73.9%
LOCAL				
Children & Youth	1,167,823	2.3%	713,010	1.4%
Other Local Funding	230,889	0.5%	196,025	0.4%
NON-GOVERNMENT				
Foundations	152,412	0.3%	337,361	0.7%
Contributions/Fund Raising	201,233	0.4%	219,493	0.4%
Other Local Funding	293,630	0.6%	326,926	0.6%
In-Kind	108,848	0.2%	36,283	0.1%
Total	\$49,869,011	100.0%	\$50,614,803	100.0%

Expenditures
by Category



Expenditures
by Program



EXPENDITURES BY PROGRAM	16-17 REVISED ANNUAL BUDGET	16-17 ACTUAL EXPENSES	17-18 ANNUAL BUDGET
HEAD START/EARLY HEAD START EXPENDITURES			
Personnel	5,187,472	5,184,914	5,456,044
Fringe Benefits	2,083,387	2,088,452	2,498,451
Travel	314,336	314,985	275,941
Professional Fees	84,475	91,620	61,393
Supplies	573,132	593,825	408,066
Other	312,633	312,260	390,217
Renovations	211,961	211,820	93,976
Indirect Overhead	1,437,921	1,438,666	1,517,532
Total	10,205,317	10,236,542	10,701,620
EARLY CHILDHOOD DEVELOPMENT			
Personnel	2,845,316	2,871,002	3,109,944
Fringe Benefits	1,169,684	1,181,140	1,538,639
Travel	58,211	57,154	79,208
Professional Fees	41,075	29,957	71,873
Supplies	750,707	714,315	894,673
Other	333,314	313,292	316,976
Renovations	7,938	7,936	0
Indirect Overhead	867,975	864,100	1,000,859
Inkind	108,852	108,848	108,852.00
Total	6,183,072	6,147,744	7,121,024
SUBSIDIZED CHILD CARE - LEHIGH COUNTY			
Personnel	907,985	904,750	892,965
Fringe Benefits	321,959	314,969	489,231
Travel	956	954	1,150
Supplies	19,911	19,908	2,000
Subcontracts/Subsidy	22,375,567	22,135,185	24,794,429
Other	13,983	13,204	20,365
Indirect Overhead	213,072	209,378	233,250
Total	23,853,433	23,598,348	26,433,390
NE KEY - KEYS TO QUALITY INITIATIVES			
Personnel	1,394,634	1,392,002	1,353,641
Fringe Benefits	478,723	478,697	485,229
Travel	111,821	113,510	142,752
Professional Fees	139,313	129,647	209,012
Supplies	117,169	106,342	114,923
Subcontracts/Subsidy	6,904,204	6,838,666	3,926,405
Other	59,613	60,916	56,901
Indirect Overhead	412,063	400,487	419,381
Total	9,617,540	9,520,267	6,708,244

DONATIONS AND GRANTS

July 1, 2016 -
June 30, 2017

SUPERSTARS

\$50,000+

PPL Corporation
United Way of the
Greater Lehigh Valley

5 STAR CHAMPIONS

\$20,000 - \$49,999

Avalon
Mr. and Mrs. Malcolm N. Briggs
Julius & Katheryn Hommer
Foundation
Harry C. Trexler Trust

4 STAR CHAMPIONS

\$5,000 - \$19,999

Air Products, Inc.
BB&T
Steve and Barbara Diamond
Mr. Edward J. Donley
John and Michele Donley
Embassy Bank for the Lehigh
Valley
Island Foundation
Dr. and Mrs. Robert Lovett
Barbara Mulholland estate
Mr. and Mrs. Anthony Salvaggio
Philadelphia Insurance Companies
PNC Financial Services Group
St. John's Lutheran Church
Two Rivers Health & Wellness
Foundation
UGI Utilities, Inc.
UPMC Health Plan
ViaWest

3 STAR CHAMPIONS

\$2,000 - \$4,999

Adams Outdoor Advertising
Mr. and Mrs. Donald M. Bernhard
Reverend and Mrs. Keith Brown
Capital BlueCross
Mr. Christopher Cardenas
Central Moravian Church

Mr. and Mrs. Tom
Daub

Mr. and Mrs. John R.
Diamant

Mrs. Dorothy Dologite

Dr. Elaine Donoghue

Denise Drummer

Mr. and Mrs. Eugene D. Ervin

Mrs. Nancy and Tim Eutsler

Mr. and Mrs. Donald S. Follett

Ms. Sara George

Mark and Susan Gumz

Mr. and Mrs. Thomas R. Hall

Just Born, Inc.

Kremmer's Cafe & Catering, Llc

Mrs. Patricia Levin

Mascaro & Sons

St. John's United Church of Christ

Ruth P. Seruga

Thomas F. Staley Foundation

Caroline Vickrey

2 STAR CHAMPIONS

\$500 - \$1999

Mrs. Noel Adams
ADP
Mrs. Laura Almeida
Andesa Financial Management,
Inc.
George and Judith Arangio
Foundation Trust
Hank Barnette
Mr. and Mrs. Frederick H.
Bedford, Jr.
Ms. Christine M. Beretsel
Mr. and Mrs. Keith Boroch
Mr. and Mrs. Geoffrey F. Boyer
Joseph and Mary Pat Brake
Bill and Irene Brown
B. Braun Medical Inc.
BSI Corporate Benefits
Alvin H. Butz, Inc.
Center for International Private
Enterprise
Raj Chowdary
Ms. Iris Cintron
Mr. and Mrs. Charles Cohen
Mr. and Mrs. James Coker
Concannon, Miller & Co.
Mr. and Mrs. L. Anderson Daub
Da Vinci Science Center
Ms. Claire I. DeFazio

Diefenderfer Electrical
Contractors, Inc.

Mr. Christopher Donigan

Mr. Percy H. Dougherty

Pat and Shirley Dyer

Tim and Sandra Edmiston

Scott and Cathy Fainor

Mr. and Mrs. Ray L. Federici

Mr. and Mrs. Robert Foster

Mrs. Barbara Fraust

Mr. and Mrs. Robert E. Gadomski

Ms. Megan Marie Gaspar

Cdr Calvin S George, Jr.

Ms. Deborah S. German

Richard and Rebecca Gorton

Gross McGinley LLP

Mrs. Elsbeth Haymon

Mr. and Mrs. William F. Hecht

Peggy Hobbs

Holencik Exteriors

Holt Family Foundation

The Frederick J. Jandl Foundation

Mr. and Mrs. Arnold H. Kaplan

Craig Kauffman and Julie Timmcke

Mr. and Mrs. John H. Kemps

Klunk & Millan Advertising

Mr. Steven W. Kraft

ksa&d, Inc.

David and Kathy Leber

Lehigh Valley Partnership

The Lehr Foundation

John and Paula Margraf

Master Supply Line

Susan Meell

Moore Township Lioness Club

Ms. Joan Miller Moran

NAI Summit

Ms. Loraine N. Neal

Northampton Community College

Northampton County Medical
Society Alliance

Old Navy

Mrs. Carla Ott

Patricia Poppe

Ms. Susan Powell

River Valley Waldorf School

Martha and John Robb

Dr. Arthur L. Scott

The Seltzer Group

Mr. and Mrs. Robert E. Vitale

Weis Markets

ONE STAR CHAMPIONS

\$100 - \$499

Stark Ackerman

Jacqueline Agostinho

Air Pro-Air Products Retirees
Association

Beth Altemose

Dr. Karen Angello Antonio

Leslye Arsht

Ms. Anne Baum

Gus and Judy Belaires

Mr. and Mrs. Sanford Beldon

Bethlehem Business Forms

Dr. Ellen B. Bishop

Boston Foundation

Boutiquetogo

Mr. James F. Bova

Mrs. Andrea Brady

Ms. Michana Johnson Brown

Mr. and Mrs. Robert A. Bryson

Dr. Elizabeth Bugaighis

Mercedes Pereira Bugos

Charles Dectis Painting, Inc.

Joseph and Susan Cimerola

Mr. and Mrs. Debra Claycomb

Coca-Cola Bottling Company
of the Lehigh Valley

Martin D. Cohen, Esq.

Computer Management &
Marketing Associates, Inc.

Mr. and Mrs. Thomas Conroy

Mr. Randall Copeland

Court Appointed Special
Advocates

Creative Closets

Mr. and Mrs. Donald & Mary Lou
Cummings

Mario Cuzzubo

Joanna Davis

Denise DeMena

Ms. Elaine Deutch

Debra Diaz-Lopez

Mr. and Mrs. Thomas Donley

Robin Dougherty

Tina S Duhigg

Mr. Larry Erickson

Erv Fetherman

Ms. Nyanda Finley de Santos

Jenny Frei

Gap, Inc.

Ms. Michelle Giletto



Volunteers from Aesculap washed CSC school buses as part of United Way of the Greater Lehigh Valley's Day of Caring.



From left: Jennifer Knelly, CSC Early Ed Director, works with Carol Swavely, of Easton; Danette Dicks, of Washington, DC, and Christina Fecio, of Buffalo, NY, during the Middle States Association review.

Mr. Devan Gillaird
Ellen Bonnie Griffen
Mrs. Karen D. Hamm
Robert and Bonnie Hammel
Ms. Shelly Harkins
Haverford Trust Company
Charles & Sharon Heidecker
Drs. Roy and Ellen Herrenkohl, Jr.
Dr. Paula Hess
Highmark Blue Shield
Mr. and Mrs. David D. Hoffman
Mr. James Horvath
Hotel Bethlehem
Infera
Mr. and Mrs. Harvey O. Johnson
Mr. and Mrs. Nick A. Kavounas
Mrs. Ruth A. Keblish
Lori A Keiper
Mr. and Mrs. Colburn Q. Kent
Mr. and Mrs. Glenn E. Kinard
King Spry Herman Freund
& Faul, Llc
Mrs. Mary G Kippen
Mr. and Mrs. Bryan Kluck
Lance and Jennifer Knelly
Kenneth & Beth Krick
Jay Kshatri
Mr. Paul Lacourciere
Ms. Desiree Lake
Denise Laskody
Lehigh Valley IronPigs
Ms. Lisa Leiss
Brynn Levine
Mr. and Mrs. John R. Lovett
Lutheran Congregational
Services, Inc.
James and Elizabeth Lyons
Mr. and Mrs. Thomas J. Lyons
Mr. and Mrs. William Mack
Mr. and Mrs. L. Charles Marcon
Mr. James B. Martin

Monique McCants
Dan and Lucinda McCarthy
Mr. James R. McIntosh
Kelly McNamara
Ms. Shirley Miller
Larry Mitchener
Mr. and Mrs. Kenneth H. Mohr
Ms. Samantha Nathan
Mrs. Constance T. Noonan
Roger Noonan
Brad and Janice Osborne
Shawn Palik
Thomas and Cathy Pasqua
Mr. John Pfeiffer, Jr.
Michael Pickett
Hobart and Pam Porter
Mrs. Patricia Powers
Mr. David R. Rabaut
RCN Business
Rich Read
Mrs. Judith Remaly
Dr. Judith Rex
The Rider-Pool Foundation
Roble Capital Alliance Corp
Mr. and Mrs. Richard W. Rogers
Gerald Rorer

Scott D. Shoup
Mr. Neal G. Simon
Mr. and Mrs. Luis and Cristina
Sinisterra
Mr. and Mrs. Ronald S. Skinner
Ms. Malaka Soliman
Spectra Venue Management
Mr. Roger Stamm
William & Elaine Stephens
John & Patricia Sullivan
Susan Bella Jewelry
Ms. Deidra Vachier
Dr. and Mrs. John D. Van Brakle
David and Ann Vezina
Mr. David V. Voellinger
Ms. Carrie Ward
Ward's Oriental Rug Service
Barbara Watkins
Wegmans
Dave and Anne Wenger
Ms. Janice G. Weston
Wicked Sweet
Dr. and Mrs. Kenneth H. Wildrick
Deb Yahraes

**AND MANY FRIENDS
UP TO \$100**



The Morning Call donated warm clothing for CSC students during the annual holiday drive.



Jennifer Roke, of Old Navy, helped gather donations during the annual holiday drive.

Our Mission

Prepare young children
and their families to succeed in learning and
in life through innovative, comprehensive,
leading-edge services.



Our Vision

CSC exemplifies excellence
in early learning, providing inspiration and
leadership that engages our communities
to put children first.

1520 Hanover Avenue, Allentown, PA 18109 | 610-437-6000 | cscinc.org